

Access 211N

VoIP Residential Gateway



Superior voice quality even
with heavy data traffic

Telco Systems Access211N VoIP residential router gateway delivers toll-quality voice over existing broadband service (DSL, cable, etc.). Combined with an internal full feature router, it enables service providers to easily and cost-effectively provide their residential and small office home office (SOHO) subscribers with high-quality VoIP service using traditional analog telephones and fax machines.

Service providers and users have uniquely positioned Access211N as the best solution in its class with its rich feature set and superior voice quality. Users find the voice rivals their landline service even while maintaining available bandwidth to provide high speed downloads and sending or receiving emails.

Access211N uses enhanced traffic shaping which ensures the best voice quality and bandwidth, on top of integrated QoS and powerful priority

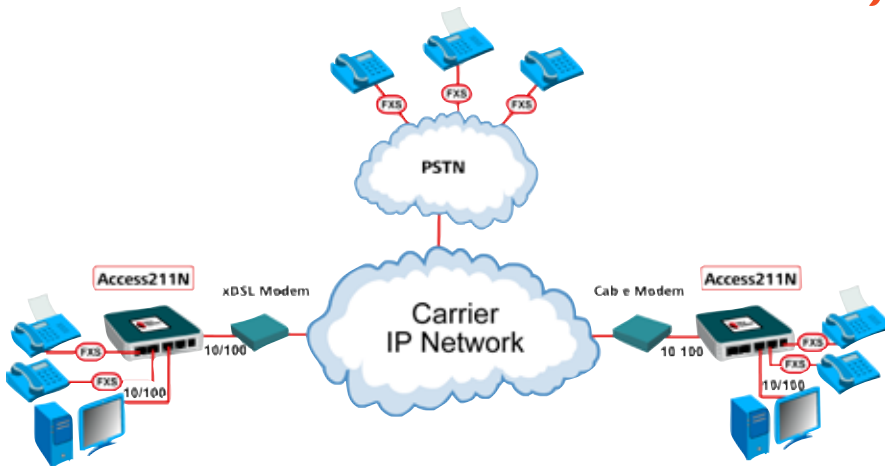
mechanisms. Among its many QoS mechanisms, it provides unique traffic shaping features that ensure the voice gets the appropriate bandwidth. It uses voice priority mechanisms such as 802.1p while leveraging Diffserv and TOS marking to guarantee undisturbed, clear voice calls.

Access211N offers auto-provisioning and auto-configuration tools for mass deployments, simplifying and speeding up field deployment as well as support and maintenance. It can be automatically configured and upgraded through TFTP or HTTP servers, reducing OPEX and human error.

Access211N is one in a series of VoIP residential gateways from Telco Systems®. This product family offers up to 4 Ethernet ports for LAN or video applications, FXO, 10/100Base-T copper, and 100BaseFX fiber uplink WAN interfaces.

- Superior voice quality using various QoS mechanisms and traffic shaping
- Major protocol support SIP, MGCP
- Two independent phone lines (FXS)
- Two 10/100Base-T Ethernet ports for WAN and PC
- Complex CODECs on both ports as well as T.38 and G.711 fax
- Ultra-compact, only 3.5" (88.9 mm) square
- Stackable, desk or wall-mountable solution is fast and simple to install and use
- Embedded router eliminates home router
 - DHCP server client and relay
 - NAT server enables simultaneous phone and PC use on one IP address
- PPPoE and PPTP client
- Voice activity detection (VAD) saves bandwidth

Access 211N – VoIP Residential Gateway



Key Applications

- ▣ Voice services over broadband services
- ▣ Solution for complexes
- ▣ Solution for MDU/MTU to connect to voice service
- ▣ Enable added-value service for Hospitality industry
- ▣ Integrated voice and data in one product
- ▣ Home gateway

Specifications

Voice Protocols

- SIP (RFC 2543, RFC 3261 selected sections)
- MGCP (RFC 2705, NCS)

CODECS (concurrently on both ports)

- ITU G.711 (μ-law, A-law)
- ITU G.723.1
- ITU G.726
- ITU G.729 A/B
- ITU T.38 (SIP, MGCP)
- ITU FXS

Voice Features

- Automatic fax/modem detection
- Voice Activity Detection (VAD)
- Comfort Noise Generation (CNG)
- RTP voice packet encapsulation
- DTMF detection and generation
- Enhanced call features: Caller ID, call hold, attended/unattended call forward, 3 way conferencing, redial
- Automatic tone generation: dial, busy, fast busy, ring back, stutter tone, distinctive ring

Quality of Service

- Voice priority over data IEEE 802.1p
- IEEE 802.3 Traffic shaping using dynamic bandwidth limitation
- Layer 3 TOS marking

Routing and Provisioning

- PPPoE RFC 2516
- PPTP RFC 2637
- Dynamic Host Configuration Protocol (DHCP) server (RFC 2131), client (RFC 2131), and relay
- Network Address Translation (NAT)
- RFC 2068 HTTP
- Static and dynamic IP address assignment
- DMZ

WAN Interface

- 10/100Base-T auto-sensing (IEEE 802.3u)
- Connector RJ-45
- Transmission Full/half duplex, auto negotiation, auto detect, auto polarity, cross or straight cable

LAN Interface

- 10/100Base-T auto sensing (IEEE 802.3u)
- Connector RJ-45
- Transmission Full/half duplex, auto negotiation, auto detect, auto polarity, cross or straight cable

LAN Cabling

- 10Base-T UTP, Cat. 3, 4, 5 100m
- 100Base-T UTP, Cat. 5 100m

Telephony Interface

- Analog Connector RJ-11 (POTS)
- 5 REN (distance dependent)

Management

- Web-based management for user and Admin
- TELNET
- Remote auto configuration mass software download and auto configuration using TFTP or HTTP
- IP Configuration DHCP or static

Security

- Passwords, encrypted configuration file

General

- Dimensions: (H) 0.95" (24.1mm)
(W) 3.5" (88.9mm)
(D) 3.5" (88.9mm)
- Power: 5 VDC external power supply
- Weight: 0.88 lbs (0.4 kg)
- Operating Temp: 0° to 45° C (32° to 113°F)
- Operating Humidity: 10% – 90%, non-condensing

Emission and Safety Regulations

- FCC part 15 class B, UL, CUL, CE

Ordering Information

Part Number	Description
AC211N-z	VoIP gateway, 2 voice ports, 1 10/100BaseTX LAN port, 10/100BaseTX uplink port. z = S for SIP, M for MGCP



Int'l Headquarters

Tel: +972-9-866-2525
Fax: +972-9-866-2500
sales.emea@telco.com
http://www.telco.com

US Headquarters

Tel: +1-800-221-2849
Fax: +1-781-551-0538
sales@telco.com
http://www.telco.com

Germany

Tel: +49-241-4635490
Fax: +49-241-4635491
info@batm.de
http://www.telco.com

France

Tel: +33(0)1-567-12-773
Fax: +33(0)1-437-71-780
support@batm.fr
http://www.batm.fr

Asia Pacific

Tel: +65-6224-3112
Fax: +65-6220-5848
info.apac@telco.com
http://www.telco.com

Japan

Tel: +81(3)5215-5709
Fax: +81(3)5215-5704
Info.jp@telco.com
http://www.telco.com