

# Bulkhead-Style Fiber Optic Panels

## Patch, Splice and Combination

### Overview

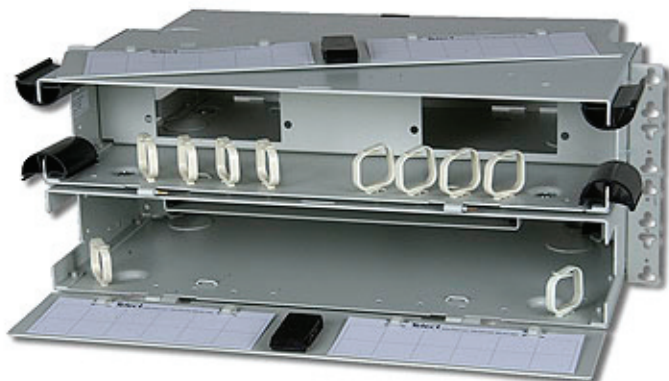
Telect bulkhead-style fiber optic panels provide cost-effective patch, splice and splitter capabilities in an industry-standard footprint. Panels range from 1 RU to 4 RU, with variable densities to support virtually any application or requirement.

### Applications

- CATV
- MTSO
- Outside plant
- Central office
- Optical distribution/cross-connect

### Primary Benefits

- Compliance in design
  - Bend radius management
  - Flammability safety
  - Structural reliability
- Lightweight construction
- Standard footprint
- Simple installation
- Scalable to help manage costs
- Pre-loaded configurations accelerate deployment



LCX-C4RU

### Specifications

#### Dimensions and Weights

All panels	Width	Depth
	17" (432 mm)	11" (280 mm)
	Height	Weight
1 RU patch or splice panel	1.75" (44 mm)	5 lbs (2.27 kg)
2 RU patch or splice panel	3.5" (89 mm)	6 lbs (2.72 kg)
3 RU patch or splice panel	5.25" (133 mm)	7 lbs (3.18 kg)
4 RU patch or splice panel	7" (178 mm)	8 lbs (3.63 kg)
2 RU combination panel	3.5" (89 mm)	10 lbs (4.54 kg)
4 RU combination panel	7" (282 mm)	12 lbs (5.44 kg)
6 RU combination panel	10.5" (267 mm)	14 lbs (6.35 kg)
8 RU combination panel	14" (356 mm)	16 lbs (7.26 kg)

#### Mechanical

Enclosure type	Rack-mount panel
Capacity	12, 24, 48, 72, or 96 ports based on configuration
Connector type	SC, ST, or FC, based on configuration
Material	Aluminum
Panel mounting	19" or 23"

#### Environmental

Humidity	0 to 90%, non-condensing
Temperature	-5 to 55 deg. C

#### Compliance

Agency compliance	NEBS, ETSI, Zone 4 Seismic reliability
-------------------	---

For additional information on Telect's bulkhead-style fiber optic panels visit [www.telect.com](http://www.telect.com) or contact our sales team at 1.800.551.4567.

# Bulkhead-Style Fiber Optic Panels

## Patch, Splice and Combination

Step one: Select panel size and density.

Step two: Select patch plates, splice trays and accessories as required.

### Patch Panels

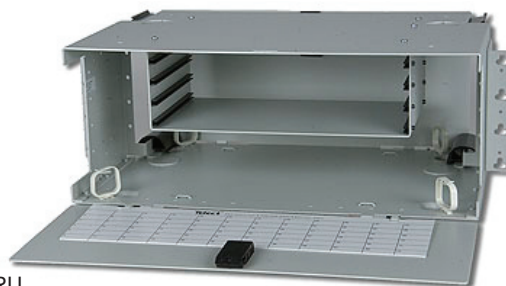
Description	Part Number	Patch Plates Required
1 RU/12-port	LCX-M1RU	2
2 RU/24-port	LCX-M2RU	4
3 RU/48-port	LCX-M3RU	8
4 RU/72-port	LCX-M4RU	Twelve 6-port patch plates
4 RU/96-port	LCX-M4RU	Twelve 8-port patch plates



LCX-M1RU

### Splice Panels

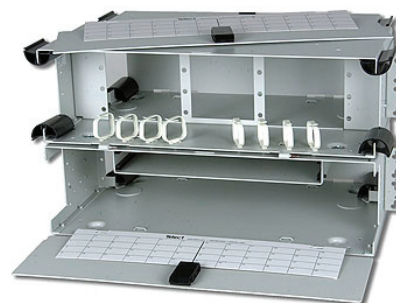
Description	Part Number	Splice Trays Required
1 RU/12-termination	LCX-S1RU	Included in panel
2 RU/48-termination	LCX-S2RU	1
3 RU/48-termination	LCX-S3RU	2
4 RU/72-termination	LCX-S4RU	3
4 RU/96-termination	LCX-S4RU	4



LCX-S4RU

### Combination Panels

Description	Part Number	Patch Plates Required	Splice Trays Required
2 RU/12-port	LCX-C2RU	2	Included
4 RU/24-port	LCX-C4RU	4	1
6 RU/48-port	LCX-C6RU	8	2
8 RU/72-port	LCX-C8RU	Twelve 6-port	3
8 RU/96-port	LCX-C8RU	Twelve 8-port	4



LCX-C6RU

### Accessories

#### 6-Port Patch Plates

SC/UPC	055-0000-6010
SC/APC	055-0000-6070
FC/UPC	055-0000-2010
FC/APC	055-0000-2070
ST/UPC	055-0000-3010

#### 8-Port Patch Plates

SC/UPC	055-0000-6080
SC/APC	055-0000-6090
FC/UPC	055-0000-2080
FC/APC	055-0000-2090

#### 12-Port Patch Plates

LC/UPC	055-0000-5010
--------	---------------

#### Splice Tray

24-fiber splice tray	LCX-S-HSF
Splice sleeves	KIT-SLEEVES

#### Cable Management

Cable management hook kit, front panel, white	KIT-CMHOOK
Cable management hook kit, front panel, black	KIT-CMHOOK-BLK
Cable management hook kit, rear panel, white	KIT-CMRHOOK
Cable management hook kit, rear panel, black	KIT-CMRHOOK-BLK
Cable exit arc for 3 RU and 4 RU panels	KIT-CMARC
Clamp kit	KIT-CLMP

#### Additional Items

Bonding/grounding kit	KIT-BOND
Blank faceplate	055-0000-9000