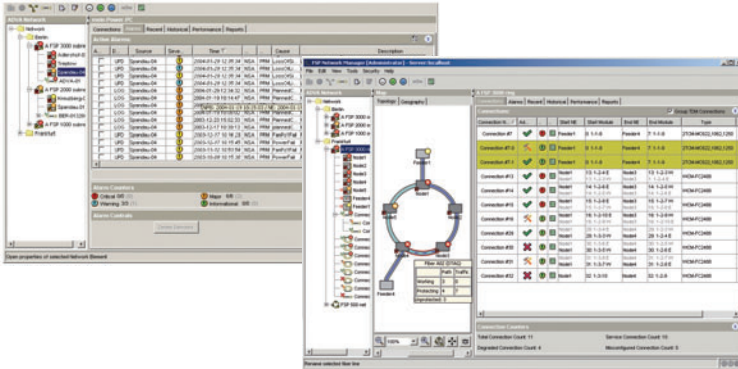


FSP NETWORK MANAGER

NETWORK SOLUTION



The FSP product family provides comprehensive Optical+Ethernet networking solutions for access, metro core and regional networks. ADVA Optical Networking is focused on the needs of enterprise and service provider customers deploying data, storage, voice and video applications.

The FSP Network Manager is a user-friendly Network Management System (NMS) that provides end-to-end configuration, management and surveillance of a network built from ADVA FSP network elements. The system offers reliable, secure and flexible access through any node on the network to ensure superior network availability and premium service levels.

Service provider and enterprise customers use the FSP Network Manager to greatly simplify their Optical+Ethernet network operations by streamlining the provisioning, monitoring and reporting processes in their network operations environment.

The FSP Network Manager covers several aspects of network operation on all managed equipment. It discovers the topology of nodes in sub-networks and provides logged event and configuration capabilities. Fault, configuration, inventory, security and performance management for all network nodes can be accessed by multiple users across the entire network. Tools for alarm correlation and in-depth analysis increase efficiency in network problem diagnostics. Combined with the FSP Service Manager, service-based end-to-end provisioning and management dramatically increase efficiency in network operations.

The self-explanatory Graphical User Interface (GUI) offers a variety of graphical views including physical vs. logical network layout, multiple predefined alarm lists and performance monitoring reports. All status lists and reports can be customized by user-definable sorting and filtering functions, offering unparalleled efficiency and flexibility in service assurance.

The configuration of performance-monitoring entities associated with network elements and services can be accomplished by simple point-and-click processes. The performance data collected by the network is stored in a database from which it can be used to create customized reports. Older data can be automatically archived and compressed to save valuable database storage space.

The FSP Network Manager integrates with existing Operating Support Systems (OSS) by offering powerful northbound interfaces such as TMF MTOSI, SNMP or CSV file export. Such integration enables automation of the many steps needed for service delivery and assurance.

ADVA Optical Networking designs and delivers all products with a commitment to optimize the total cost of ownership and return on investment. Leveraging the latest technologies for accelerating planning and engineering, simplifying installation and provisioning, streamlining network operations, improving scalability and increasing energy efficiency enables cost-effective and profitable Optical+Ethernet networking.

FEATURES + BENEFITS

- Intuitive graphical application for end-to-end network management covers all network elements of the FSP product family
- Reliable and flexible access to any FSP node on the network ensures superior service levels
- Accelerated and precise network operation via the FSP Service Manager enables service-based provisioning and simplified end-to-end management
- Scheduled automatic backup of node configurations provides for effective business continuity management
- Extensive analysis tools and charting functionality simplify performance monitoring, alarm reporting, fault analysis and log-file generation
- Integrates with other operating support systems through powerful northbound interfaces that adapt to legacy environments

**ADVA**TM
Optical Networking

SPECIFICATIONS



FSP PRODUCTS SUPPORTED

- FSP 3000
- FSP 2000
- FSP 1500
- FSP 500
- FSP 150

GENERAL

- Based on TMN principles
- Intuitive point-and-click GUI application
- Context-sensitive menu navigation, tooltips and online help
- Graphical overlay with alarm summary indicators
- Wizards for multi-stage management operations
- Simplified installation and provisioning of Network Elements

CLIENT-SERVER ARCHITECTURE

- Devices in different sub-networks can be managed by a single Network Manager
- Multiple GUI clients on different remote user workstations interact with the same server simultaneously
- GUI clients can be virtualized using Citrix® Presentation Server

FUNCTIONALITY

- Schematic representation of managed subnets
- Display of network topology with path or fiber topology view
- Listings of events or alarms with user-definable filters
- Event log and active alarm list
- Correlation, analysis and re-assessment of alarm severity
- Fault correlation and root cause analysis
- Performance data retrieval with multiple consolidation options
- Graphical presentation of performance data
- Inventory reports with different levels of detail
- Geographical map for easy topology identification
- Seamless integration with local craft applications of all FSP family products
- Centralized Network Element software upgrade with options for scheduled or batch operation

SECURITY

- Comprehensive password protection
- Password encryption
- Customizable user privileges
- User activity log
- External Radius user authentication
- Customer self-management (user-restricted network views)

BACKUP, ARCHIVE & HIGH AVAILABILITY

- Online backup and restoration of FSP Network Manager database
- Centralized Network Element configuration backup and restoration
- 1+1 hot standby configuration for highest system reliability

CONNECTION TO NETWORK ELEMENTS

- Direct via Ethernet
- In-band via Optical Supervisory Channel (OSC) or via Embedded Communication Channel (ECC) with self-restoration in protected configurations

PROTOCOLS

- SNMP for communication to the network elements
- FTP for centralized network element software distribution, backup and restoration of element configuration data
- Support for SNMPv3 and SCP for communication on a higher security level

OPERATING SYSTEM

- Windows XP or Server variants
- Solaris

SEE RELEASE NOTES FOR FURTHER INFORMATION

- Recommended hardware configuration
- Device-specific functionality supported for different FSP products

ADVA OPTICAL NETWORKING SOLUTIONS

core & regional	<ul style="list-style-type: none">▶ Long haul transport▶ Metro core transport▶ Packet optical transport	
metro access	<ul style="list-style-type: none">▶ Wireline backhaul▶ Wireless backhaul▶ Ethernet access	
customer premise	<ul style="list-style-type: none">▶ Grid /Cloud computing▶ SAN connectivity▶ Corporate backbone	

For more information please contact an ADVA Optical Networking consultant or visit us at www.advaoptical.com

Data sheet, version 07 / 2009

ADVATM
Optical Networking