

# FiberGuide®

## The Industry's Most Comprehensive Data Center Optical Raceway System

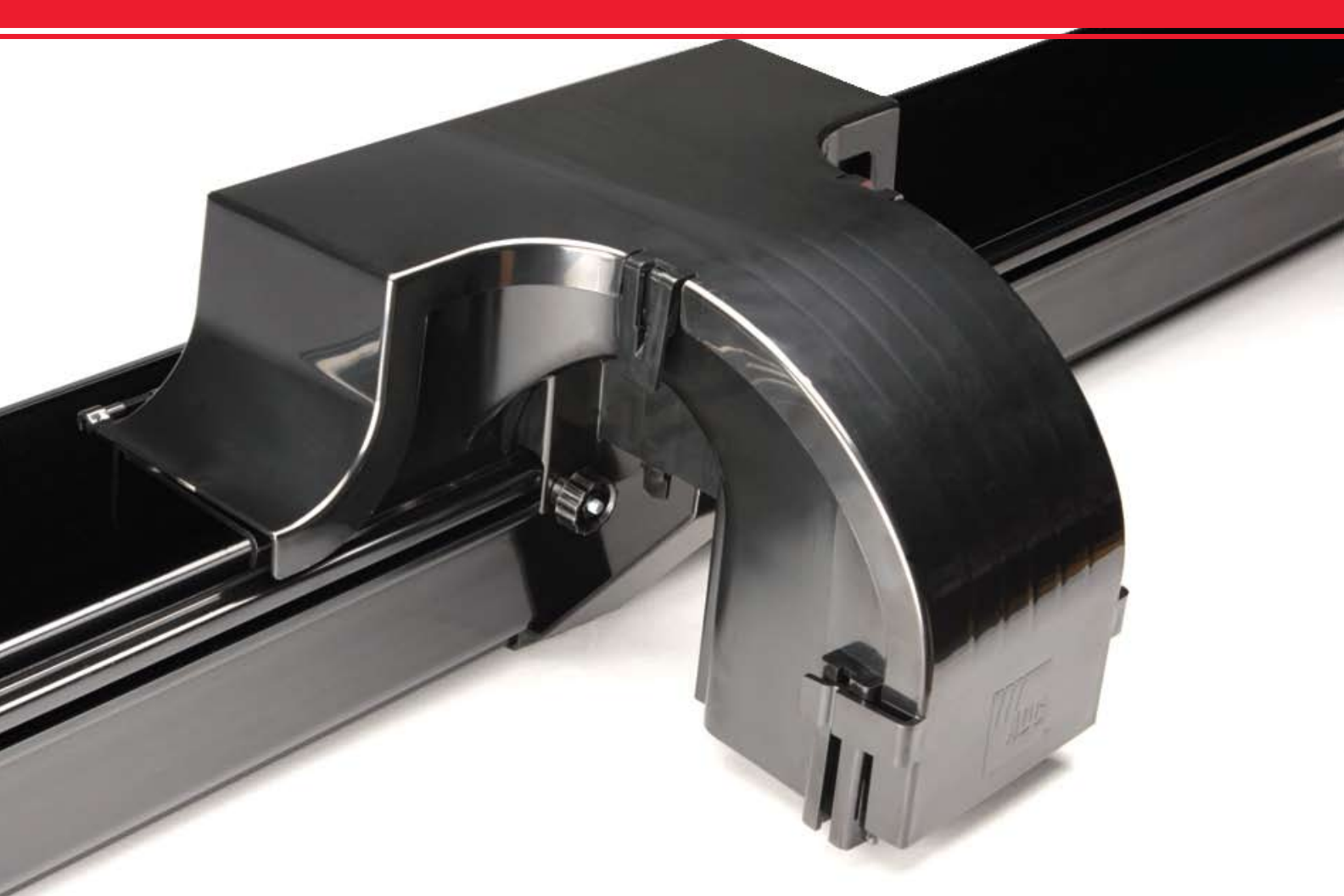
ADC's FiberGuide® fiber management systems offer the greatest breadth of data center optical raceway products in the industry. In response to customer requirements, ADC continues to innovate and improve FiberGuide systems with the addition of its Black FiberGuide system. The new black systems give you a color choice for your data center and offers the same options and flexibility of the traditional yellow system.

## Absolute Fiber Protection

FiberGuide is a raceway system designed to protect and route fiber optic patch cords and multi-fiber cable assemblies to and from fiber splice enclosures, fiber distribution frames and fiber optic terminal devices. FiberGuide ensures a two-inch minimum bend radius is maintained throughout the system.

The FiberGuide system is a complete set of products designed and manufactured to ensure total off-frame protection and ease of use. Basic components include horizontal and vertical straight sections, horizontal and vertical elbows, downspouts, junctions and numerous support hardware and flex-tube kits.





## Features and Benefits:

### Speed of Installation

FiberGuide® systems feature a variety of products that allow for quick and easy installation. Express Exit™ drops as well as tool-less products including Snap-Fit™ junctions, snap-on covers and new hinged cover options save valuable time for installers.



### Speed of Deployment

The Express Exit system enables new drops to be added or removed quickly and easily. A drop can be added into a fully loaded raceway in seconds—without cutting.



### Raceway Flexibility

FiberGuide features 38 support structures, over 75 fittings, multiple drop options and several other components to suit any application you create.

### Fiber Protection

ADC's broadband expertise translates into maximum protection for your network. Two-inch minimum bend radius is maintained throughout the system regardless of the raceway size.



### Strength and Durability

100% raceway reliability—stands up to any challenge.

## Available in a variety of sizes

### 2x2

Ideal for smaller installations or for vertical routing of a maximum of four hundred 2 mm fiber optic patch cords.

### 2x6

Designed for height restricted environments, this robust system provides the same support and system flexibility of the traditional 4-inch-high system while saving 2 inches of overhead space.

### 4x4

It has been engineered to allow straight sections to be self-supporting over a span of up to 1.83 m (6 feet).

### 4x6

Features the same benefits of the 4-inch system and a maximum trough capacity of 2,400, 2 mm patch cords.

### 4x12

The 12-inch-wide trough has a maximum capacity to support nearly 5,000, 2 mm patch cords. Perfect for runs over fiber frame lineups and perimeter routes.

### 4x24

The 4x24-inch system is the ultimate raceway solution to securely route and protect patch cords over high-density optical distribution frames.

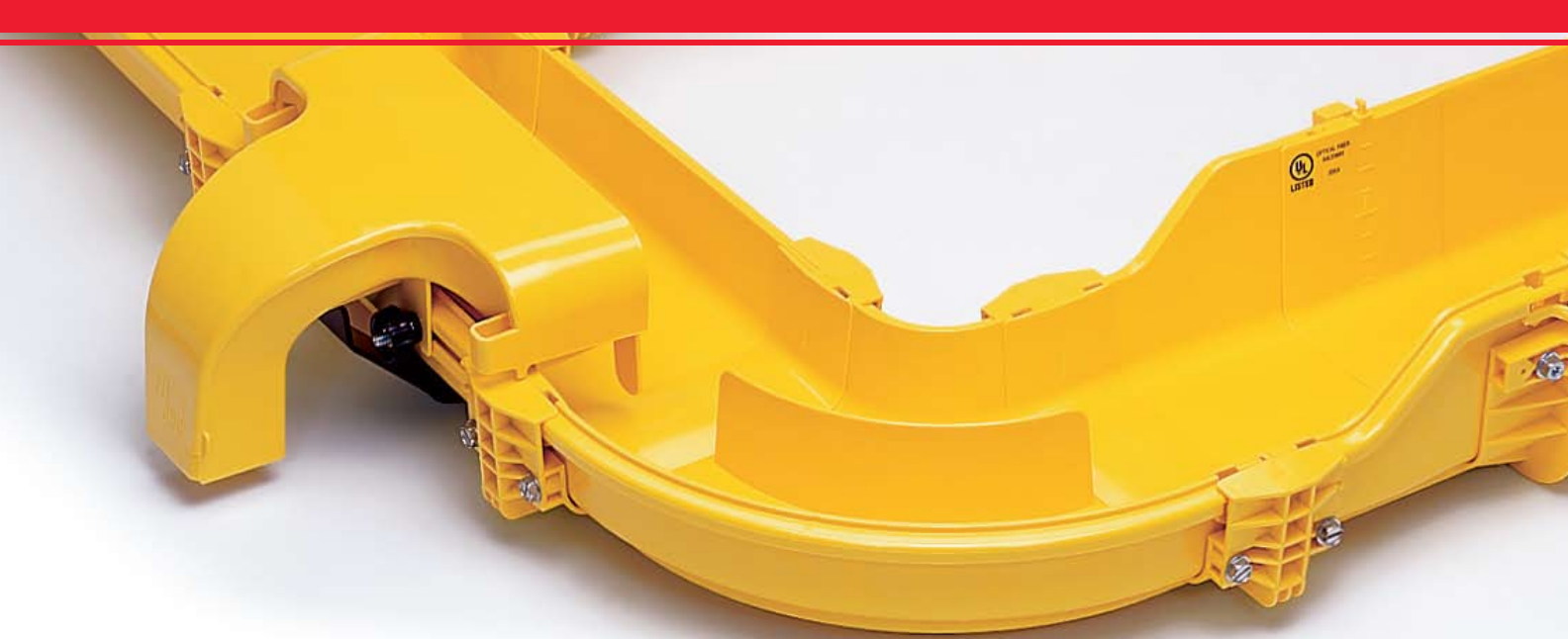


## How can **this** help cool my data center?

Raising fiber into overhead raceways allows more airflow through floor panels.

Unrestricted airflow requires less power for cooling efforts. Clearly defined cable routing paths keep cables organized, using less space and avoiding the tangled mess of cables that can restrict airflow. ADC supports green data centers and environmental efficiency by designing and manufacturing solutions for passive airflow improvement that reduce cooling and power requirements. A well-planned infrastructure will make a tremendous difference and ADC can get you there.





## A Complete Data Center Fiber Management System

ADC's Data Center FiberGuide, available in both black and yellow systems, is a complete and comprehensive fiber raceway solution. Designed for flexibility, speed and durability, it is the number one choice in protecting your valuable network's cabling infrastructure. For complete ordering information, please refer to the TrueNet Structured Cabling Solutions catalog (102094AE) or contact ADC today at 800-366-3891 or 952-917-3000.

# TrueNet

ENGINEERED FOR UPTIME



**Website: [www.adc.com](http://www.adc.com)**

From North America, Call Toll Free: 1-800-366-3891 • Outside of North America: +1-952-938-8080

Fax: +1-952-917-3237 • For a listing of ADC's global sales office locations, please refer to our website.

ADC Telecommunications, Inc., P.O. Box 1101, Minneapolis, Minnesota USA 55440-1101

Specifications published here are current as of the date of publication of this document. Because we are continuously improving our products, ADC reserves the right to change specifications without prior notice. At any time, you may verify product specifications by contacting our headquarters office in Minneapolis. ADC Telecommunications, Inc. views its patent portfolio as an important corporate asset and vigorously enforces its patents. Products or features contained herein may be covered by one or more U.S. or foreign patents. An Equal Opportunity Employer



106243AE 4/08 Original © 2008 ADC Telecommunications, Inc. All Rights Reserved