

## ISG 400



### GigE Flexible Carrier Ethernet Access Platform

The ISG 400 delivers a high-performance, high-reliability, flexible solution for Carrier Ethernet over both native Ethernet and existing infrastructure. Six tri-speed interfaces deliver native Ethernet GigE applications. The flexible network interface slot enables Carrier Ethernet over existing SONET/SDH and PDH networks. Per-flow service creation and service assurance features deliver sophisticated services required by customers. Reliability is assured with sub-50ms protection switching and redundant power supplies.



#### Technical Specifications

##### Interfaces

- 4 x 10/100/1000 Electrical
- 6 x SFP, SX/LX/ZX/CWDM
- Hot-swappable interface modules
  - 4 x OC3/OC12 or STM1/STM4
  - DS3/E3

##### Configuration Options

- Client: 4 electrical/optical Ethernet
- Network Interfaces
  - 2 GigE, sub-50ms LACP
  - OC3/OC12 1+1 APS
  - STM1/STM4 1+1 APS
  - Line-rate GigE over 2xOC12/STM4
  - Line-rate GigE over dual-protected OC12/STM4
  - DS3/E3

##### Physical, Compliance/Certification

- 99.999% availability
- Hot-swappable redundant power supplies, optics
- 1.75" x 17" x 8"
- Hardened -40°C to +65°C
- -48DC, AC Power

- NEBS L3, Zone4
- ETSI CE/CB, RoHS
- MEF 9, 14, 20, 26

##### Service Differentiation Features

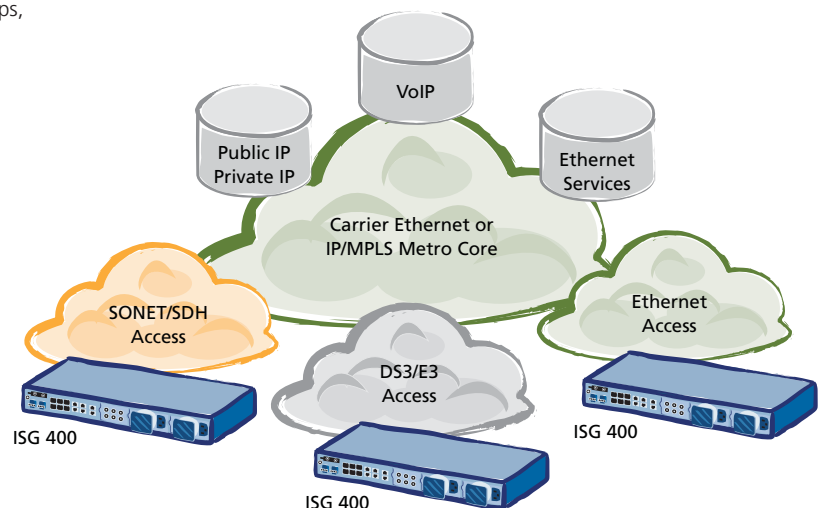
- 128 EVCs
- Triple tag management
- Hierarchical QoS
- 128 dedicated queue groups, 1024 queues
- GFP/VCAT/LCAS, X.86
- STS3c/VC4 concatenation
- LACP – 50ms protection
- SONET/SDH 1+1 – 50ms protection

##### Service Assurance Features

- MaestrOS™ Service Engine
- 802.3ah
- 802.1ag
- Y.1731
- UNI 2.2 E-LMI
- SNMPv3
- RADIUS
- Syslog

#### FEATURES

- Intelligent GigE NID
- Multi-customer, multi-application aggregation
- Ethernet over SONET/SDH, OC3/STM1, OC12/STM4
- Ethernet over DS3/E3



Overture Networks, Inc.  
Research Triangle Park, NC  
tel: 919.387.4100  
www.overturenetworks.com

Overture Networks, Ltd.  
Warwick, UK  
+44 1926 840 045

RoHS  
compliant

**OVERTURE**  
NETWORKS