

# Pedlock® Magnum™ Pedestals (CPLM)

## Buried copper distribution pedestals offering greater splicing capabilities with the good-housekeeping Magnum backboard

Charles Pedlock Magnum Pedestals (CPLM) provide superior environmental protection of copper buried distribution points in the outside plant. CPLM Pedestals are designed for universal use, with a good-housekeeping backboard that offers greater splicing areas and many convenient attachment points for terminal blocks and other hardware, with optional ladder bar attachments for large cable bundle storage.

CPLM Pedestals feature a non-metallic PVC construction that won't rust, corrode, chip or fade. A lift-off locking dome not only provides technician-friendly 360° access to internal working areas, but also creates a "Bell-Jar" effect that protects internal components from floods.

A variety of offered sizes and accessories ensure the right fit for every application, including splice points, subscriber distribution points, and transmission access locations.

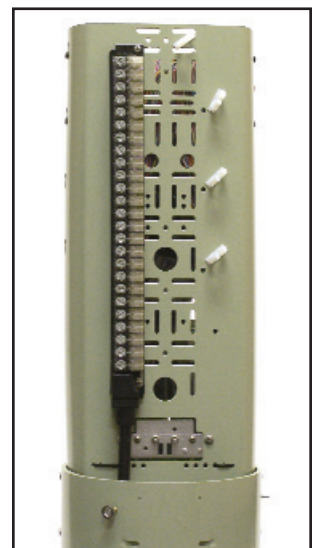
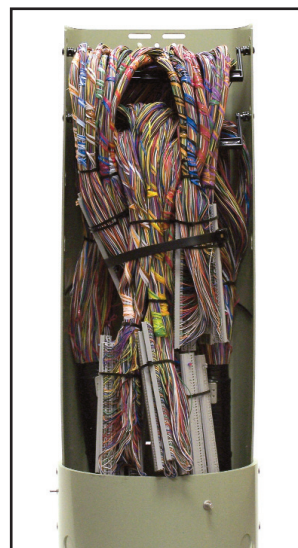
### Product Specifications

Pedestal Diameter	Splicing Volume	Max. Splice Capacity	Weight (Pole/Stake Base)	Weight (Integral Stake)
6"	450 cu. in.	700 wires/350 pairs	13.0 lbs.	16.0 lbs.
8"	750 cu. in.	1,000 wires/500 pairs	16.5 lbs.	20.5 lbs.
10"	1,450 cu. in.	1,600 wires/800 pairs	21.0 lbs.	27.0 lbs.



### Product Features

- Three diameters: 6', 8' and 10'
- Durable, noncorrosive, green PVC construction
- 360° access to cable and apparatus
- Universal backboard for good housekeeping with built-in aluminum ground plate, cable attachments and optional offset terminal grounds
- Locking bolt for security (216 tool)
- Service wire channel secures and protects feed and drop cables (excludes intergral base)
- Meets or exceeds industry standards for durability and long service life
- Mounting hardware provided
- Optional 2-piece rehab (split) base available for easy rehabilitation of damaged pedestals without disrupting splice bundle
- Optional shroud provides conductor protection
- Optional self-locking dome prevents accidental dome displacement from high water rise when CPLM is not locked properly
- Pole, stake or stand-alone installation
- Beveled bottom cutout design on optional Integral stakes provide for easy, stable installations
- RDUP listed



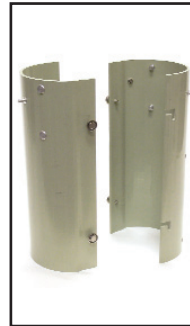
CPLM 10 shown with a typical connect and drop arrangement (joined pairs hung on ladder bars on the CO side, 25-pair terminal block mounted on drop side)

# Ordering Information

Charles Part #	Description
CPLM 6-CE	6" Pedestal, round base, Magnum backboard, service wire channel, service wire grommet
CPLM 6-IC	6" Pedestal, intergral stake base, Magnum backboard, offset terminal ground
CPLM 6-ICE	6" Pedestal, intergral stake base, Magnum backboard, offset terminal ground, service wire grommet
CPLM 6-R	6" Pedestal, rehab (split) base, Magnum backboard, service wire channel
CPLM 8-CE	8" Pedestal, round base, Magnum backboard, service wire channel
CPLM 8-IC	8" Pedestal, intergral stake base, Magnum backboard, offset terminal ground
CPLM 8-ICE	8" Pedestal, intergral stake base, Magnum backboard, offset terminal ground, service wire grommet
CPLM 8-R	8" Pedestal, rehab (split) base, Magnum backboard, service wire channel
CPLM10-C	10" Pedestal, round base, Magnum backboard, service wire channel
CPLM10-CE	10" Pedestal, round base, Magnum backboard, service wire channel, service wire grommet
CPLM10-IC	10" Pedestal, intergral stake base, Magnum backboard, offset terminal ground
CPLM10-ICE	10" Pedestal, intergral stake base, Magnum backboard, offset terminal ground, service wire grommet
CPLM10-R	10" Pedestal, rehab (split) base, Magnum backboard, service wire channel, service wire grommet

## Pedestal Accessories

002271F	Standard 6" copper dome assembly, 6" X 26.5"
003151F	Standard 8" copper dome assembly, 8" X 26.5"
002295F	Standard 10" copper dome assembly, 10" X 26.5"
017751F	Self-locking 6" copper dome assembly, 6" X 26.5"
017752F	Self-locking 8" copper dome assembly, 8" X 26.5"
017753F	Self-locking 10" copper dome assembly, 10" X 26.5"
017751F	Self-locking 6" copper dome assembly, 6" X 26.5"
017752F	Self-locking 8" copper dome assembly, 8" X 26.5"
017753F	Self-locking 10" copper dome assembly, 10" X 26.5"
80-001106-F	Complete backboard for 6" CPLM
80-001156-F	Complete backboard for 8" CPLM
80-001109-F	Complete backboard for 10" CPLM
97-PKOR06-A	6" orange high visibility cap (50 pieces)
97-PKOR08-A	8" orange high visibility cap (50 pieces)
97-PKOR10-A	10" orange high visibility cap (50 pieces)
SLK-88	Self-lock and hex sleeve
043110F	6" rehab (split) Magnum base assembly
043114F	8" rehab (split) Magnum base assembly
043130F	10" rehab (split) Magnum base assembly
24-100946-F	Service wire channel kit, 2.5" X 12.5" (25 pieces)
18-900731-F	Rectangular drop channel plug kit (25 pieces)
010376-F	1.25" black rubber base grommet plug (25 pieces)
PHP10	10" base hole plug; PVC green (100 pieces)
PHP68	6" & 8" base hole plug; PVC green (100 pieces)
CGHK	Ground hardware kit, 3x 10-32 nuts/bolts (25 pieces)
038776F	6" Magnum shroud; w/checklist label (10 pieces)
038777F	8" Magnum shroud; w/checklist label (10 pieces)
038778F	10" Magnum shroud; w/checklist label (10 pieces)
97-001777-A	6" Magnum ladder bar kit (10 pieces)
97-001778-A	8" Magnum ladder bar kit (10 pieces)
97-001907-A	10" Magnum ladder bar kit (30 pieces)
041919F	Molded Magnum D-Clip kit (100 pieces)
UMS30-STD	Metal mounting stake and hardware, 30" Length
UMS36-STD	Metal mounting stake and hardware, 36" Length
UMS42-STD	Metal mounting stake and hardware, 42" Length
97-500511-A	Universal pole mounting bracket kit (10 pieces)
028847F	Plastic splice bag and sealing kit (20 pieces)
001040F	Pedestal warning label (100 pieces)



Rehab (Split) Base



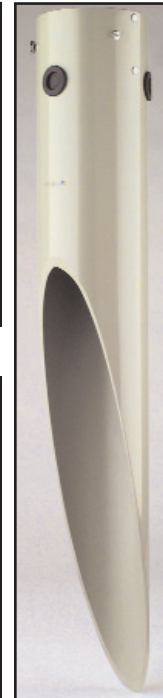
Self-Lock



High-Visibility Cap



Service Wire Channel Kit



Integral Stake



CUSTOMER SATISFACTION  
CONTINUOUS IMPROVEMENT

NETWORK EDGE INNOVATIONS™



## Dependable Solutions. Superior Support.

- Field-proven and unequaled 24-hour technical support
- Individualized application consultation
- ISO 9000/TL 9000 registered

Visit our website at <http://www.charlesindustries.com>

Charles Industries, Ltd.  
Telecommunications Group  
5600 Apollo Drive  
Rolling Meadows, IL 60008 USA

Voice: (847) 806-6300  
FAX: (847) 806-6231  
E-mail: [mktsserv@charlesindustries.com](mailto:mktsserv@charlesindustries.com)

 and Pedlock® are registered trademarks of Charles Industries, Ltd.

D-OSP029-B09