

EdgeMarc: SIP Trunking Application Overview

Overview

Service Providers and Enterprise organizations use the EdgeMarc Network Services Gateway to connect IP and TDM based PBXs to SIP trunking services. The EdgeMarc's enterprise session border controller feature set provides the following functions:

- Connects the PBX to the SIP trunking service by performing SIP protocol harmonization.
- Protects voice devices by providing voice-aware security services.
- Optimizes voice quality using traffic management and prioritization.
- Monitors the quality of real-time communications to simplify troubleshooting

The EdgeMarc automatically manipulates SIP messages and features advanced inspection capabilities that enables it to be deployed in many different environments with a wide range of PBXs and SIP trunking services.

EdgeMarc Value for Trunking Applications

Simplified installation

- Supports multiple PBX connection types - PRI, analog, IP
- SOHO to large enterprise systems
- Optional API for auto-provisioning of tenant information and dial plan

Broad interoperability

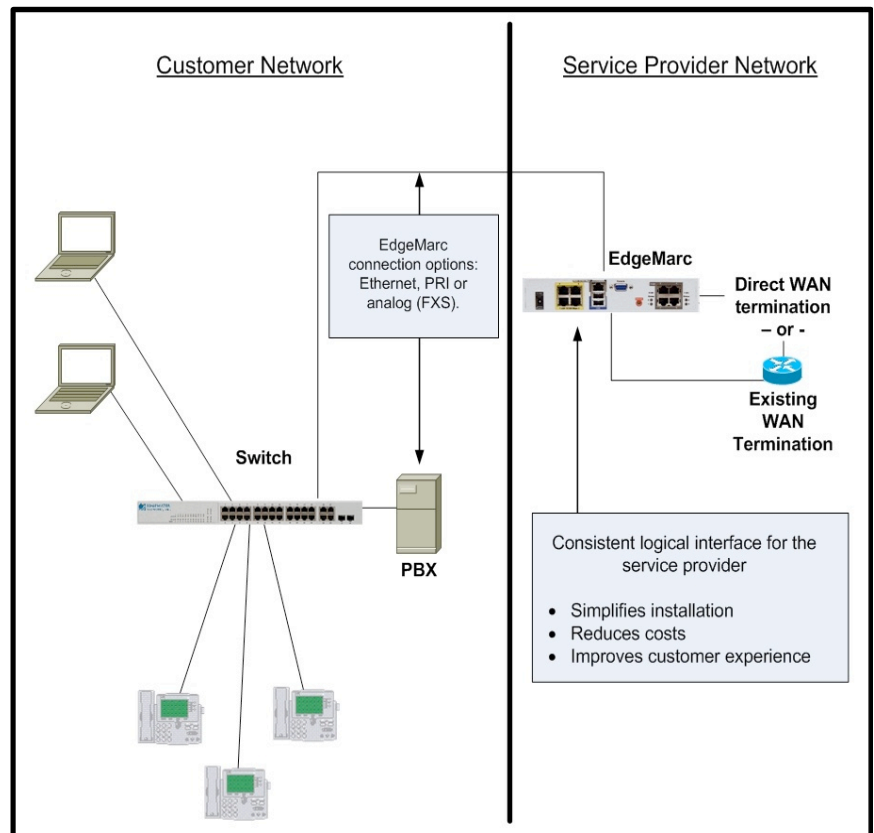
- Comprehensive list of PBX manufacturers and SIP trunking services
- Consistent logical interface for the service provider regardless of PBX type

Security and connectivity

- SIP-aware NAT/firewall
- SIP protocol harmonization: adjustments needed to connect IP PBXs to service provider SIP trunks

High quality voice

- Traffic management/QoS including prioritization, traffic shaping and diffserv marking
- Call Admission Control
- Troubleshooting
- Passive call quality monitoring
- Integrated VoIP Testing Agent



Network Diagram

The EdgeMarc provides a consistent logical interface for the service provider that simplifies installation, reduces costs and improves the customer experience.